



**Bell Copper**  
CORPORATION

TSXV: BCU  
OTCQB: BCUF

**Drilling at Bell Copper's Big Sandy Porphyry Copper Discovery, Mohave Co., AZ**

Arizona Geological Society – Diggin' Deeper

November 14, 2025

# FORWARD LOOKING STATEMENT

---

This presentation contains forward-looking statements under Canadian securities legislation. Forward-looking statements include, but are not limited to, statements with respect to the development potential and timetable of the projects; the Company's ability to raise additional funds as necessary; the estimation of mineral resources; conclusions of economic evaluation (including scoping studies); the realization of mineral resource estimates; the timing and amount of estimated future development and exploration; success of exploration activities; mining or processing issues; and environmental risks. Generally, forward-looking statements can be identified by the use of forward-looking terminology such as "plans", "expects" or "does not expect", "is expected", "budget", "scheduled", "estimates", "forecasts", "intends", "anticipates" or "does not anticipate", or "believes", or variations of such words and phrases or statements that certain actions, events or results "may", "could", "would", "might" or "will be taken", "occur" or "be achieved". Forward-looking statements are based on the opinions and estimates of management as of the date such statements are made. Forward-looking statements are subject to known and unknown risks, uncertainties and other factors that may cause the actual results, level of activity, performance or achievements of the Company to be materially different from those expressed or implied by such forward-looking statements. There can be no assurance that such statements will prove to be accurate, as actual results and future events could differ materially from those anticipated in such statements. Accordingly, readers should not place undue reliance on forward-looking statements. The Company does not undertake to update any forward-looking statements except in accordance with applicable securities laws. Any mineralization shown in pictures is from selected intervals, and not necessarily representative or indicative of the mineralization hosted on the Perseverance and Big Sandy properties.

## Qualified Person

Dr. Timothy Marsh, PhD., P. Eng., CEO, President, and Director of the Company and a qualified person as defined by National Instrument 43-101, has reviewed and approved the scientific and technical content in this presentation.

## Footnote 1

There is no certainty that the drilling to be conducted in this exploration program will result in the identification of rocks that might eventually become a mineral resource.

## ARIZONA – LAND of GIANTS

### Arizona has produced 10% of the world's copper

- Most located along the Arizona Volcanic Arc and on-trend with other significant Arizona porphyry copper deposits
- These include Bagdad, Mineral Park and Rio Tinto's RESOLUTION, which is one of the largest and highest grade copper deposits in the world

***Bell Copper is Exploring 2 Giant Porphyry Systems 30 km apart along this Prolific Producing Trend***



## GIANT PORPHYRY SYSTEMS (worlds largest metal deposits)

Porphyry System	Pyrite Shell (km)	Tonnage	Cu%	Mo %
<b>BIG SANDY</b>	<b>6 x 5</b>	????	????	????
<b>PERSEVERANCE</b>	<b>5 x 3</b>	????	????	????
Escondida	4.5 x 2.5	11.1 billion	0.77	0.01
Chuquicamata	4.3 x 3	12.5 billion	1.2	0.04
Los Bronces	2 x 0.7	5 billion	1.0	0.02
Bingham	4 x 3.5	3.2 billion	0.88	0.05
Cananea	3.5 x 4	5.1 billion	0.45	0.002
Collahuasi	4 x 6	2.9 billion	0.81	0.03
Grasberg	1 x 1	4 billion	0.60	0.00
Morenci	5 x 8	6.5 billion	0.52	0.01
Teniente	1.5 x 2.7	20.0 billion	0.56	0.026
Oyu Tolgoi	2 x 0.6	4.7 billion	1.0	0.00
Resolution	1 x 3	1.6 billion	1.5	0.037

# BIG SANDY PROJECT

CONCEALED PORPHYRY TARGET in a  
WORLD CLASS PROVINCE

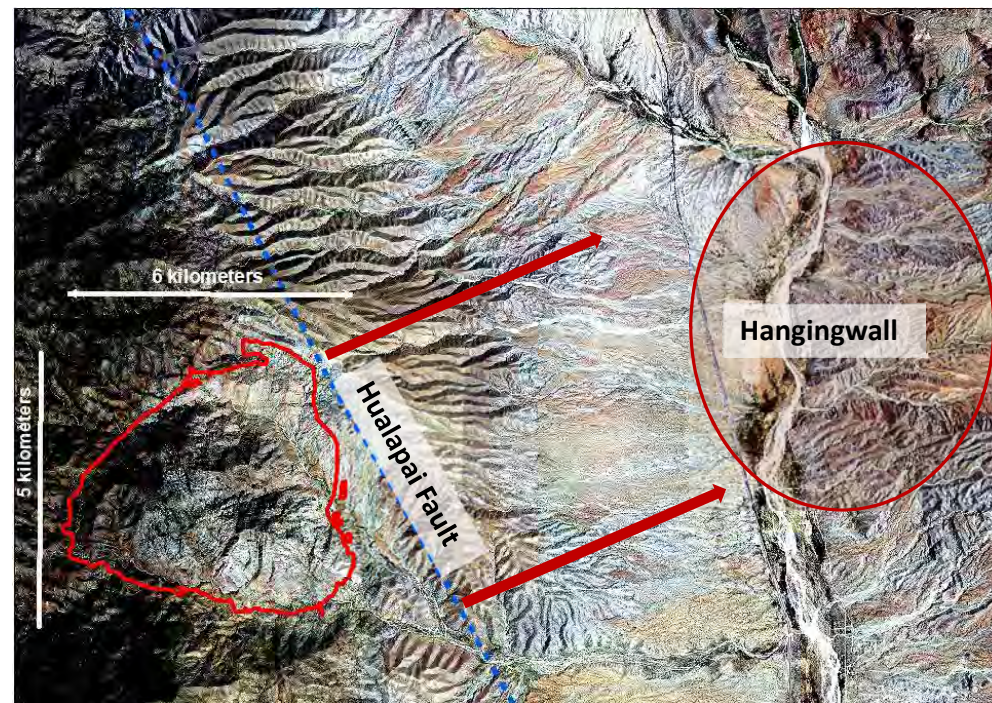


# BIG SANDY SNAPSHOT

In 2017, exploration data from the Perseverance project showed that the truncated hangingwall had been transported farther than was expected. Bell used this information to refine where the hangingwall from Diamond Joe Peak might reside

- Perseverance Analogue
- 100% owned
- 2020 Staking Influenced by Pace at Perseverance (painfully slow)
- Bell stakes 256 claims Feb – Apr & July 2020
- Exotic Copper and Iron Demonstrates Fertility
- **Fanglomerate clasts carrying + 1% copper found across 6 km**
- Quantec Magneto-telluric Survey – July 2020
- Drilling October 2020

Initial drill hole BS-1 penetrated a porphyry copper system near the inner edge of the propylitic, or “greenrocks”, environment, approximately 13 km ENE from the footwall



# EXOTIC COPPER

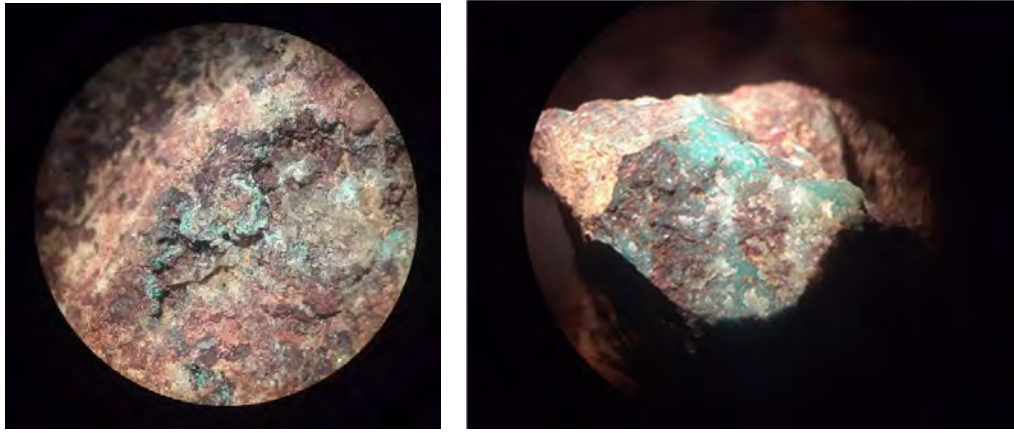
**Several unusual copper occurrences believed to be linked to a shallowly covered porphyry copper deposit.**

- Copper minerals found at Big Sandy are hosted in geologically recent terrace gravels of the Big Sandy River, in young faults that have recently conducted groundwater up to the surface, and as clasts in an extensive fanglomerate formation
- Black manganese-copper oxide deposits crop out on the property in young terrace deposits of the Big Sandy River demonstrating the recent discharge of metal-rich, acidic groundwater from the target area



**This exotic copper deposit is expected to lie down hydrologic gradient from a concealed copper-molybdenum porphyry system, analogous to the “Exotica” copper deposit below the Chuquicamata porphyry in Chile.**

# COPPER FANGLOMERATE



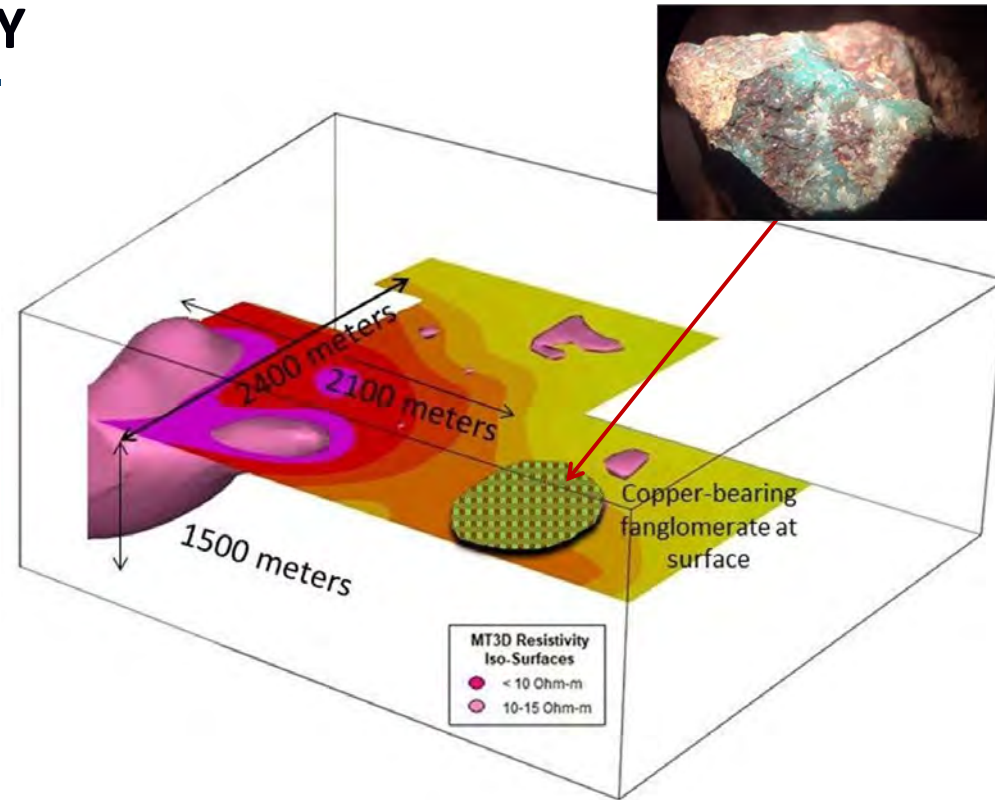
**Fanglomerate clasts carrying + 1% copper as chrysocolla and chalcocite (supergene copper minerals) found across a distance of +6 kilometers on the property**

- Many varieties of veins and alteration types typical of porphyry copper deposits (e.g. “A-veins” and “D-veins” of Gustafson and Hunt, 1975), have been found in the fanglomerate formation cropping out over an area measuring 1250 meters by 800 meters
- Heavy mineral associations in the fanglomerate are identical to those from outcropping Laramide rocks of the Diamond Joe porphyry copper system, located 12 kilometers to the west-southwest
- Coarse grain size and angularity of clasts in the fanglomerate suggest that the formation was mainly transported to its current location en masse by structural movement (i.e. faulting), rather than by sedimentary transport.

**This implies that the underlying bedrock target may be grossly intact.**

# SPARTON MAGNETO-TELLURIC SURVEY

- 2020 Survey detected a large conductivity anomaly measuring 2400 meters by 2100 meters and extending at least 1500 meters vertically
- Core of anomaly has resistivities below 15 Ohm-meters
- Anomaly is contiguous with surficial copper-bearing fanglomerate discovered in July 2020
- Interpreted conductivity anomaly extended to the southern limit of the Company's claim block, resulting in the addition of 133 lode claims for a total of 256 claims



**The Company believed that the unusual copper occurrences along with the large conductor identified in the recent MT survey were linked to a covered porphyry copper deposit at Big Sandy**

# DRILLING PROGRAM



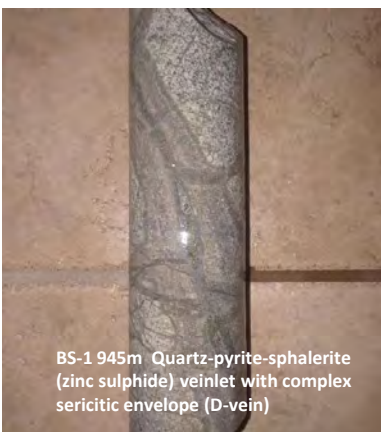
BS-1 959m Chalcocite coating  
chalcopyrite-pyrite veinlet



BS-1 964m Chalcocite (gray) coating  
pyrite in 5 cm wide D-vein



BS-1 939m Quartz veinlet carrying  
silver-gray molybdenite crystals (3  
mm) and pyrite (B-vein)



BS-1 945m Quartz-pyrite-sphalerite  
(zinc sulphide) veinlet with complex  
sericitic envelope (D-vein)

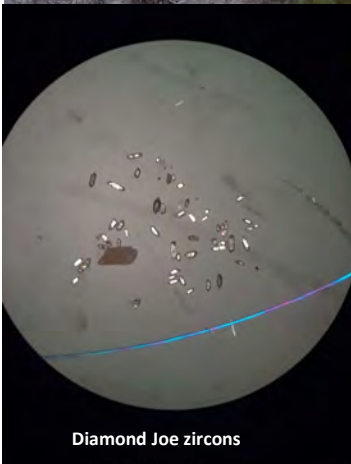
**Bell's objective was to locate the truncated top of the Diamond Joe porphyry system which we believed had been transported approximately 12 -15 km ENE onto the Big Sandy Claim block.**

- Based on the size of the target, 4 drill sites were permitted with approximately 1.6 km spacing between drill sites.

## Drill Hole BS-1 drills Deep into a new Copper Porphyry System

- BS-1 penetrated a porphyry copper system near the inner edge of the propylitic, or "greenrocks", environment
- Minerals observed in core include gossan veins (goethite, hematite, and jarosite), native copper, chalcocite, covellite, sphalerite, galena, disseminated pyrite, chalcopyrite and molybdenite carrying 8700-9300 ppm Re (i.e. nearly 1% Re).

# U/Pb Zircon Dating



## BS-1 Porphyry Same Age as Diamond Joe

- Dated by Paul O'Donnell, GeoSep Services LLC, University of Idaho
- BS-1 and Diamond Joe zircons yield overlapping (i.e. statistically indistinguishable) ages of  $74.2 \pm 1.0$  and  $74.9 \pm 1.2$  million years, samples 13.2 kilometers apart.
- Overlap with  $72.8 \pm 3.2$  million years determined by the University of Arizona (Chapman et al., 2018)
- Natural zircon contamination in both samples showed the same clusters of Precambrian ages (1.4 billion years and 1.6 billion years). Supports both porphyries injected up through, and contaminated by, the same old wallrocks.

# DRILLING PROGRAM

**With drill hole BS-1 successfully locating the truncated system on the Big Sandy Claim block, Bell is now focused on locating the potentially mineral rich copper shell.**

- Drill hole BS-2 was located approximately 1.6 km south of BS-1.
- BS-2 revealed fringing, scattered propylitic alteration and sulfide mineralization
- Based on gathered geological data from drill holes BS-1 and BS-2, Drillhole BS-3 was situated approximately 1.2 km west of BS-1



## DRILLING PROGRAM - Drill Hole BS-3 Leached Cap

**BS-3 drills into a strongly altered and veined hematitic leached capping hosted by quartz porphyry**

- Leached capping began immediately beneath gravel at an inclined depth of 1192 meters with continuous, strong, seal-brown hematite vein fillings, quartz veinlets, hydrothermal breccia, and pervasive sericitic alteration in quartz porphyry
- Leached capping extended for 111 meters to an inclined depth of 1302, directly after which disseminated chalcocite mineralization (copper sulfides) began



Core box photos representative of the 111 meters of leached capping in BS-3

## DRILLING PROGRAM - Drill Hole BS-3 Copper Sulfides

**BS-3 drills a supergene chalcocite (copper sulfide) deposit hosted by quartz porphyry**

- Chalcocite variably overprints predominantly pyritic mineralization from inclined depths of 1302m to at least 1502 meters
- Chalcocite mineralization in this 200-meter interval is interrupted by spotty jarosite-bearing shear zones lacking pyrite and chalcocite.
- No copper oxide minerals were encountered in this intersection



Core box photos representative of the 200 meters of supergene chalcocite mineralization in BS-3

## DRILLING PROGRAM - Drill Hole BS-3 Copper Sulfides

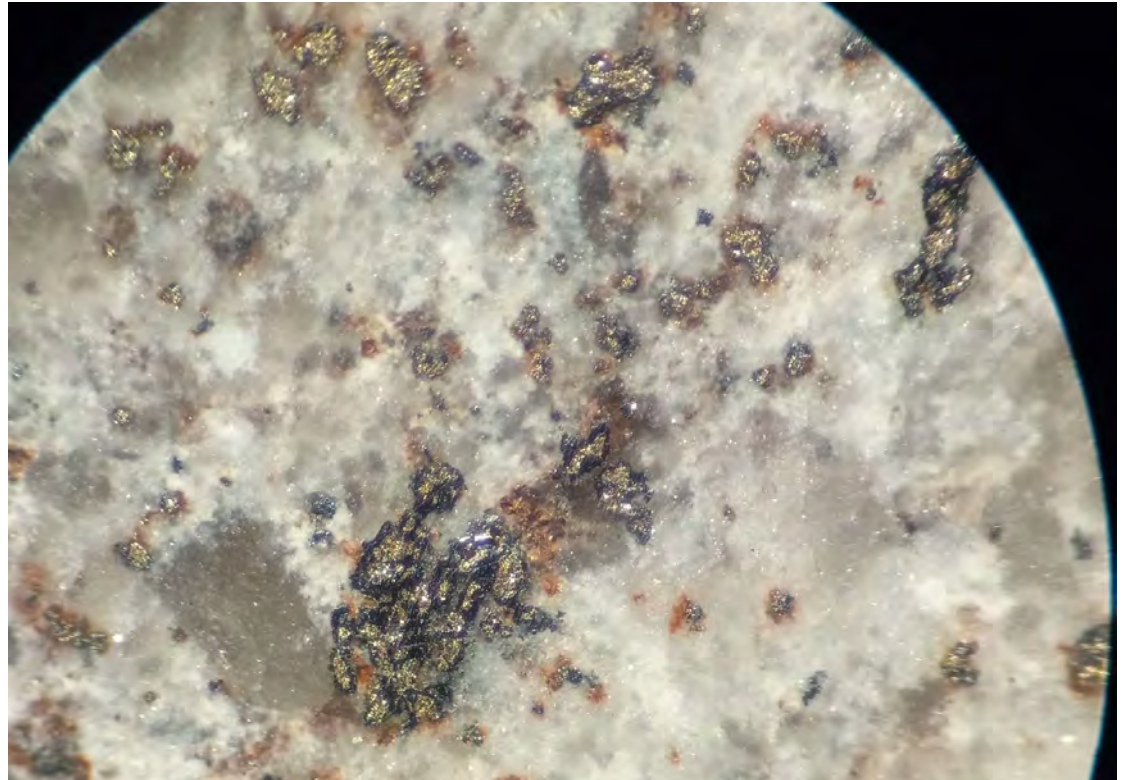
- The 200-meter interval between 1302 meters and 1502 meters returned an average grade of 0.42 percent copper (8.4 lbsCu/st) and 2.4 grams of silver per tonne, including 54 meters from 1445 meters to 1499 meters grading 0.67 percent copper (13.4 lbsCu/st) and 3.7 grams of silver per tonne.
- The maximum copper assay in the interval was 4.30 percent copper over 0.3 meters
- Two other copper assays in the interval exceeded one percent copper, including 2.65 percent copper over 1.6 meters and 2.12 percent copper over 0.60 meters.



Vein-filling chalcocite (dark gray) and pyrite (brassy) in sericitized porphyry at 1364.5 meters running 2.12 percent copper over 0.6 meters.

## DRILLING PROGRAM - Drill Hole BS-3 Copper Sulfides

- The 200-meter interval between 1302 meters and 1502 meters returned an average grade of 0.42 percent copper (8.4 lbsCu/st) and 2.4 grams of silver per tonne, including 54 meters from 1445 meters to 1499 meters grading 0.67 percent copper (13.4 lbsCu/st) and 3.7 grams of silver per tonne.
- The maximum copper assay in the interval was 4.30 percent copper over 0.3 meters
- Two other copper assays in the interval exceeded one percent copper, including 2.65 percent copper over 1.6 meters and 2.12 percent copper over 0.60 meters.



Chalcocite (dark gray) rims surrounding pyrite (brassy) in pervasively sericitized porphyry at 1304 meters running 4.3 percent copper over 0.3 meters.

## DRILLING PROGRAM - Drill Hole BS-3

- From an inclined depth of 1502 meters to the bottom of the hole at 2026.33 meters, sulfide minerals were dominated by pyrite, accompanied by minor chalcopyrite, tennantite, sphalerite, and trace molybdenite, with pyrite averaging 10 percent by weight over the interval.
- This interval (524 meters) averaged 0.16 percent copper and 2.2 grams of silver per tonne.
- The average ratio of pyrite to chalcopyrite in this interval is 20:1 by weight.



Core from BS-3 (1927.5 m) showing coarse-grained pyrite with quartz, sericite, and minor chalcopyrite (copper-iron sulfide) cutting quartz-molybdenite in quartz monzonite porphyry.



Core from BS-3 at the bottom of the hole (2026.33 m) showing coarse-grained pyrite with quartz, sericite, and minor chalcopyrite (copper-iron sulfide) in quartz monzonite porphyry. High pyrite content, pervasive late-stage sericitic alteration, and high ratios of pyrite to chalcopyrite suggest that BS-3 did not penetrate the copper-rich part of the porphyry system.

## Metallurgy - Drill Hole BS-3

**Conventional froth flotation approach was found to be successful at recovering and concentrating the value minerals.**

**Batch test copper recovery of 82-84% into a concentrate grade of 25% Cu was achieved.**

- Mineralogically, 75% of the copper in the sample was chalcocite, 15% was bornite, and the remainder was comprised of other sulfide copper minerals. Oxide copper minerals were negligible.
- Pyrite accounted for approximately 8% of the sample. Quartz at 52% and muscovite at 34% were the dominant non-sulphide species. Carbonate minerals constituted 0.1% of the sample.
- At a bulk cleaner concentrate grade of 25% Cu, silver grade was approximately 130 g/t while recovery was approximately 68%. Silver appeared to track with copper.



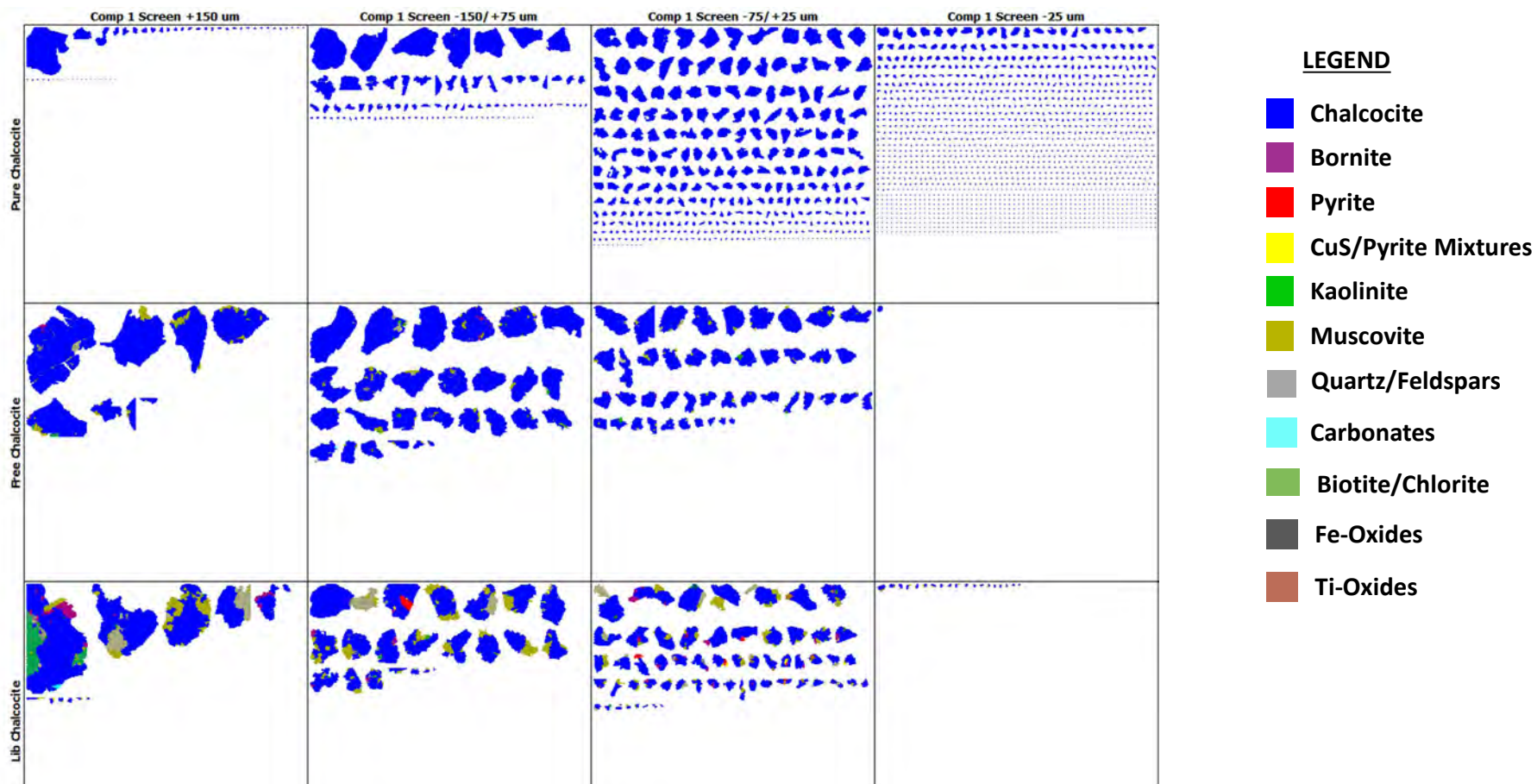
## Metallurgy - Drill Hole BS-3

- Low molybdenum feed grade made it difficult to produce a Mo concentrate, but in a best test, a Mo cleaner concentrate graded 20.7% Mo. Further test work on larger amounts of sample is required to improve upon Mo results.
- The rhenium grade was assayed in a lower grade Mo concentrate and providing it tracks with molybdenum, rhenium is estimated to concentrate to approximately 1,700 g/t Re in a Mo concentrate grading 50% Mo.

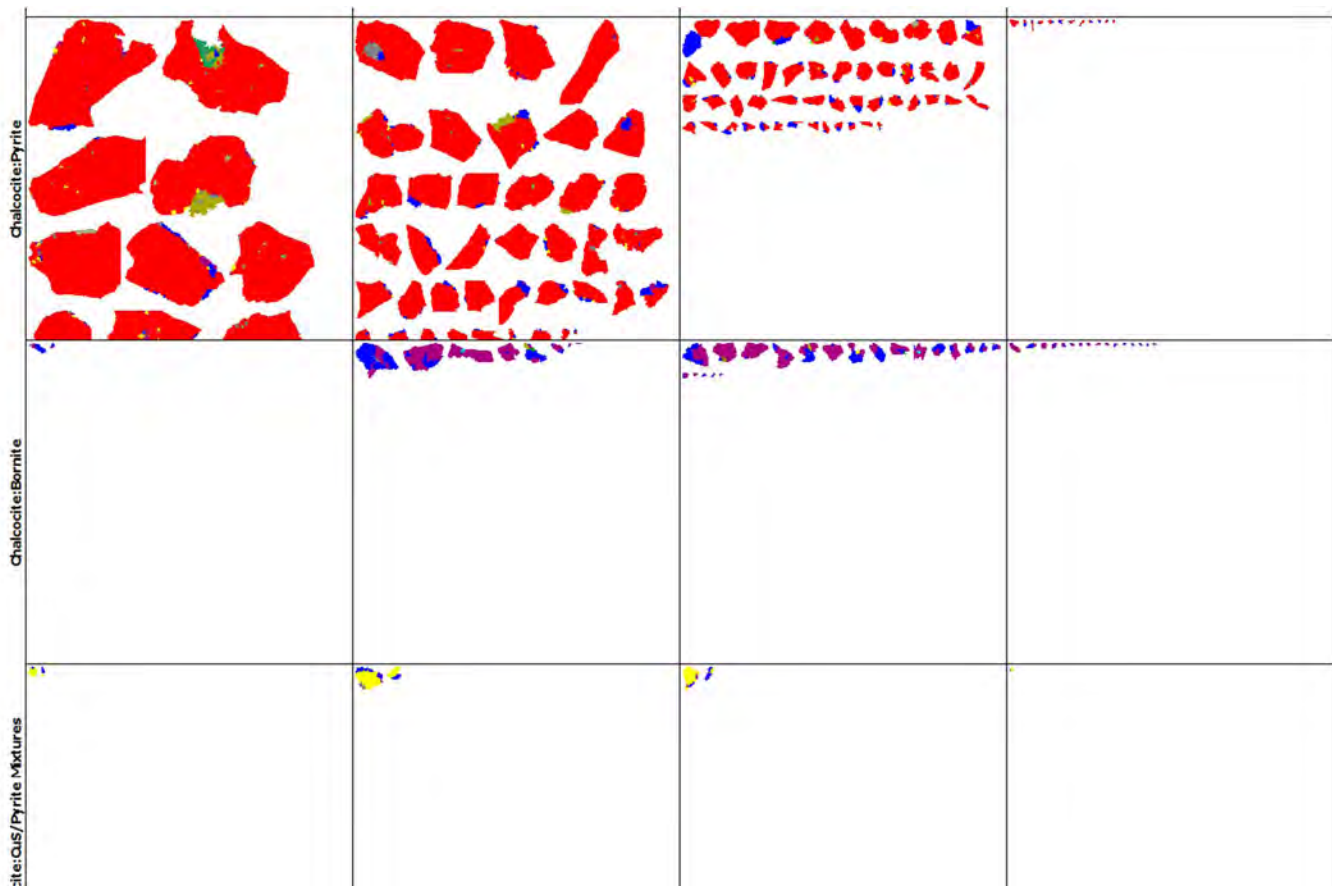
**Ferric leaching in 30 g/L sulphuric acid was evaluated on whole ore ground to a P80 of 120  $\mu\text{m}$ . The ore was amenable to leaching with copper extraction in the range of 96%. The pyrite intrinsic to the sample contributed additional free acid over the course of the leaching experiments.**



# Metallurgy - Drill Hole BS-3 TIMA-X Chalcocite Grains – Flotation Cons



# Metallurgy - Drill Hole BS-3 TIMA-X Chalcocite Grains - Composites

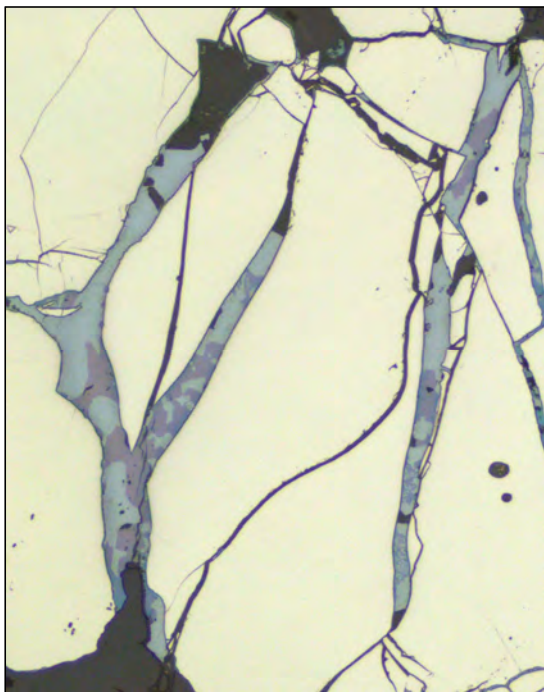


## LEGEND

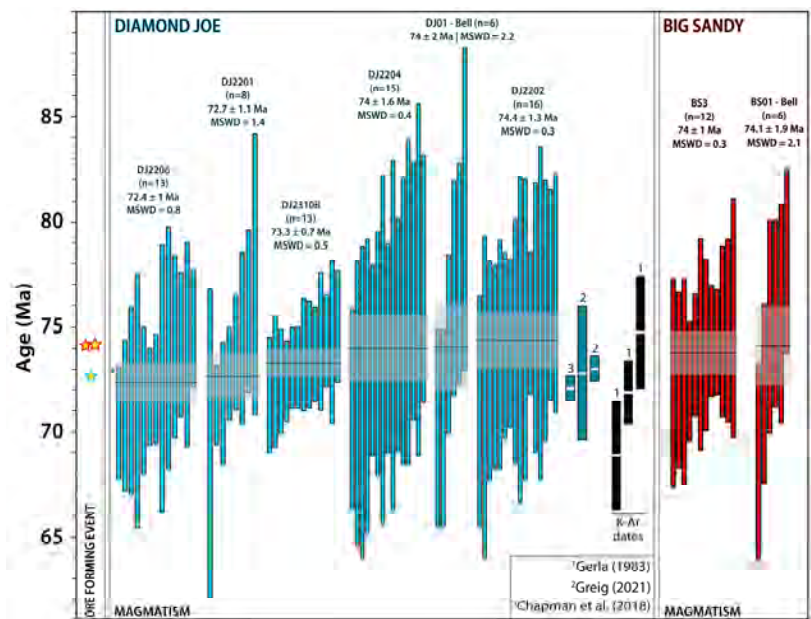
- Chalcocite
- Bornite
- Pyrite
- CuS/Pyrite Mixtures
- Kaolinite
- Muscovite
- Quartz/Feldspars
- Carbonates
- Biotite/Chlorite
- Fe-Oxides
- Ti-Oxides

# 2025 U of Arizona MS Thesis, AZ Geological Survey Critical Metals Research

Dr. Carson Richardson, Dr. Herve' Rezeau, Jonothan Chappell



- Hypogene Cu enrichment – late digenite-bornite cutting pyrite-chalcopyrite
- Exceptional Rhenium concentrations in molybdenite, approaching 1% (Dr. Holly Stein, AIRIE)



## U/Pb Zircon Dates

### Diamond Joe intrusions

from 74.4 to 72.4 Ma

### Big Sandy intrusions

from 74.1 to 74 Ma

## DRILLING PROGRAM - Drill Hole BS-4

The Company is following up the BS-3 intersection with a 900-meter step-out hole, BS-4, from a new drill pad.

- Currently Cased PQ to 1300 feet.
- Cut abundant altered porphyry clasts, native Cu, native Ag, and chalcocite-bearing clasts in deep (>3000') red gravel layers.
- Plan to drill to 4500' with mud rotary tools, and install NW casing for coring through bedrock.

Drilling to recommence January 2026



# PERSEVERANCE PROJECT

A photograph showing a tall drilling rig in silhouette against a sunset sky. The sky is a mix of orange, yellow, and blue, with a few wispy clouds. In the background, there are dark silhouettes of mountains and trees. The overall scene is dark, with the primary light source being the setting sun.

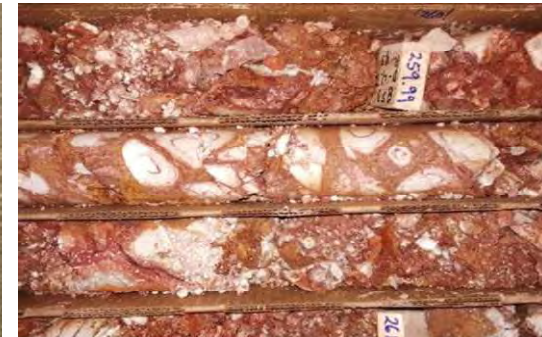
*Another* CONCEALED PORPHYRY TARGET  
in a WORLD CLASS PROVINCE

# LEACHED CAP

Nearly 150 meters of leached capping in K-19 demonstrate the scale of supergene oxidation and potential for enrichment

- Chrysocolla in K-19 supports the concept that supergene leaching and copper enrichment operated at Perseverance, and that a copper shell could be present nearby
- Groundwater (K-20, 210m below surface in gravel) carries 1500 ppm  $\text{SO}_4$ , 190 ppb Cu, 120 ppb Mo, 8 ppm F, and 370 ppb As at 7.7 pH
- Gold grains in K-20 having ornately etched surfaces suggest liberation from sulfide veins without post-oxidation transport

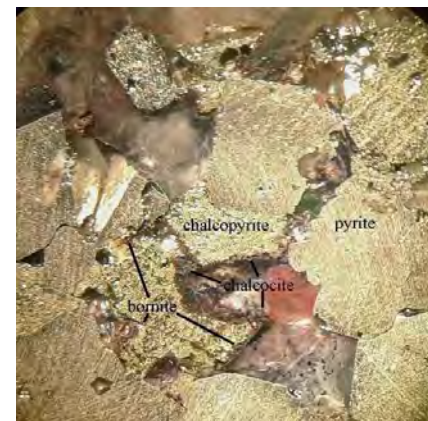
Together these features suggest proximity to major porphyry leaking As, Au, Cu, F, Mo and S from its leached cap



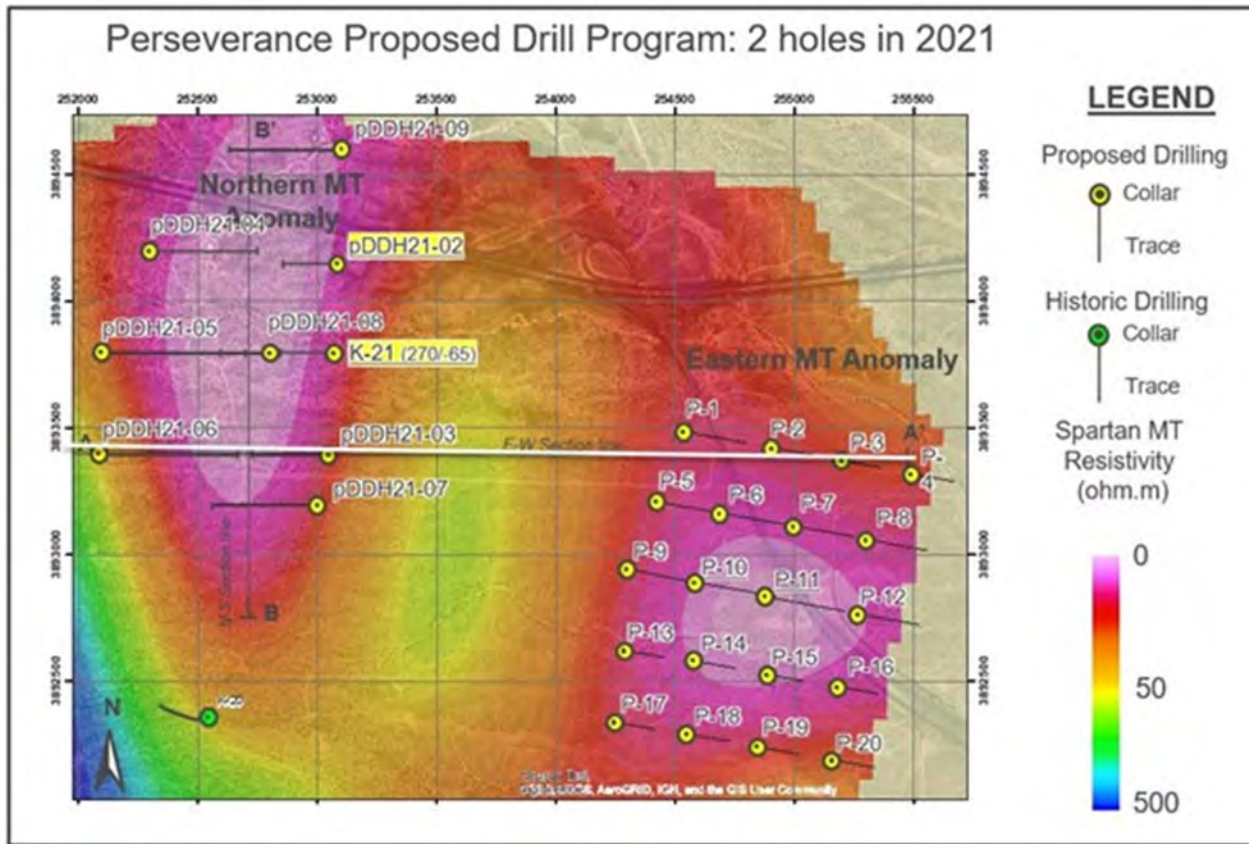
## DRILLING EVIDENCE INDICATES CLOSE PROXIMITY TO PORPHYRY

K-20 encounters the best mineralization to date indicating proximity to the targeted 2 km by 3 km Laramide porphyry buried beneath 200m to 400m of basin fill.

- K-20 includes 700+ meters of anomalous copper minerals, comprising Chalcopyrite, Bornite, and Chalcocite.
- Chalcopyrite, bornite and chalcocite in drill core suggest potential for a hypogene enrichment zone with higher-than-average copper grade
- Downhole acoustic televiewer (ATV) measurements of fractures and vein-sets suggest the copper source is located to the northeast



# Drill Hole K-22 Shows Evidence of Nearby Porphyry Copper System



## K-22 Intercepts Shows Evidence of Nearby Porphyry System

- Diamond core drill completed K-22 to a depth of 1262 meters, cutting clay-altered, sericitized, and propylitically altered Precambrian host rocks and Laramide-age porphyry dikes.
- Short intervals of the hole were characterized by potassic alteration, including both K-feldspar and shreddy biotite, accompanied by disseminated chalcopyrite (copper sulfide) mineralization.
- A Typhoon IP-resistivity survey is to be carried out on K-22, to be followed up with further exploration drilling.



# Bell Copper

CORPORATION

TSXV: BCU  
OTCQB: BCUFF



[www.bellcopper.net](http://www.bellcopper.net)



[info@bellcopper.net](mailto:info@bellcopper.net)



800 418 8250